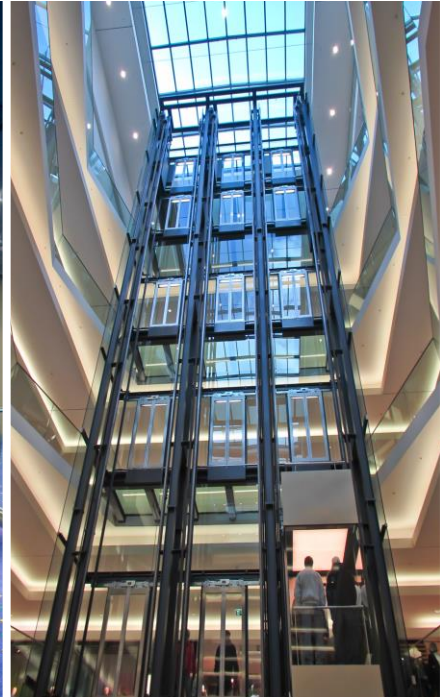


## CFQ Series



## CABINET FAN Backward Curve



GTG Industries Sdn Bhd certifies that the model: CFQ shown herein is licensed to bear the AMCA Seal. The ratings shown are based on tests and procedures performed in accordance with AMCA Publication 211 and AMCA Publication 311 and comply with the requirements of the AMCA Certified Ratings Program.





## CFQ Series

- ◆ Suitable for installation with duct
- ◆ In line application
- ◆ Uniquely designed external rotor motor
- ◆ Compact in size
- ◆ Low sound level

## Introduction

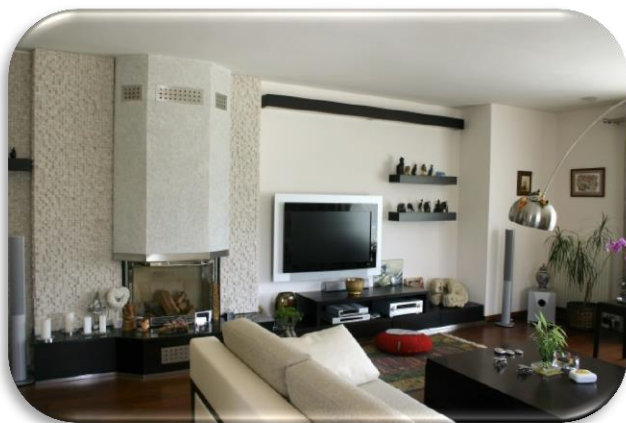
CFQ Series is specially designed for a wide range of general commercial and industrial applications with the emphasis on good air flow performance at low sound level.

### Impeller

- Backward curve centrifugal

### Motor

- Moisture resistant, suitable for humid and damp environment
- Permanently lubricated ball bearings ensuring reliable and maintenance-free operation
- Class F insulation
- Speed controllable
- Built-in thermal protection device
- Protected to IP54, against dust and moisture



### Casing

- Manufactured from high quality grade GI sheet

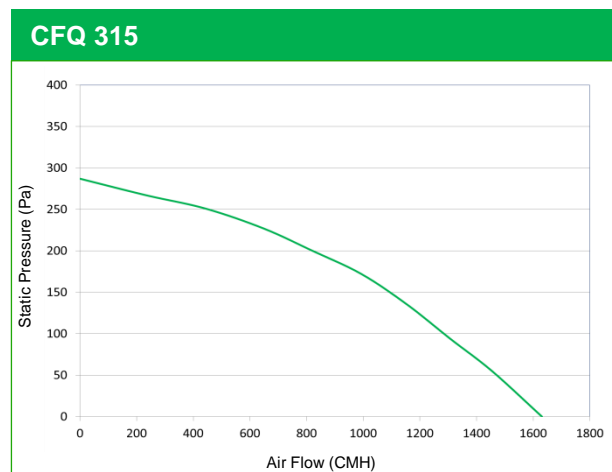
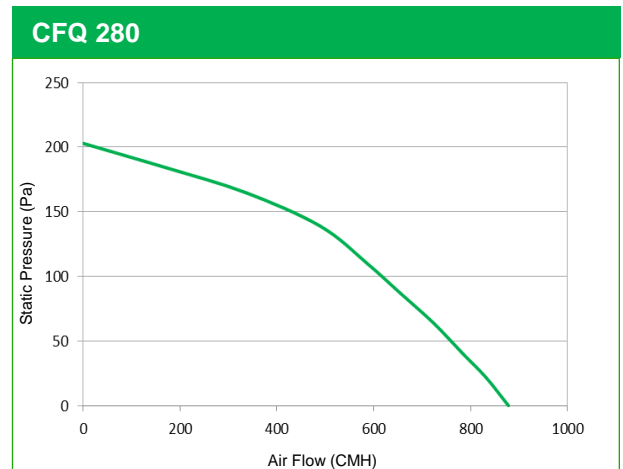
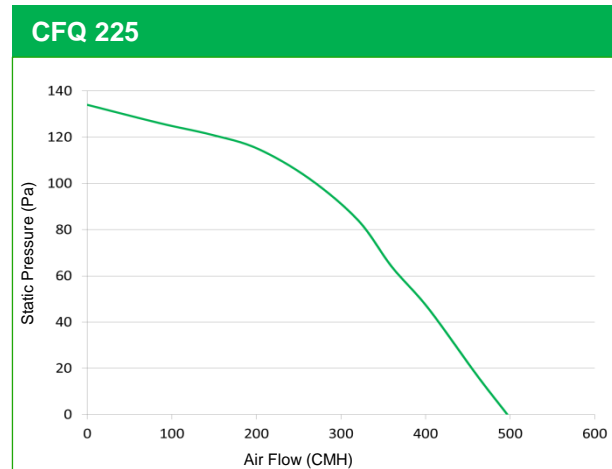
## Accessories (optional)

### Linear Speed Controller



Model C012 (up to 400W)

## Performance curve



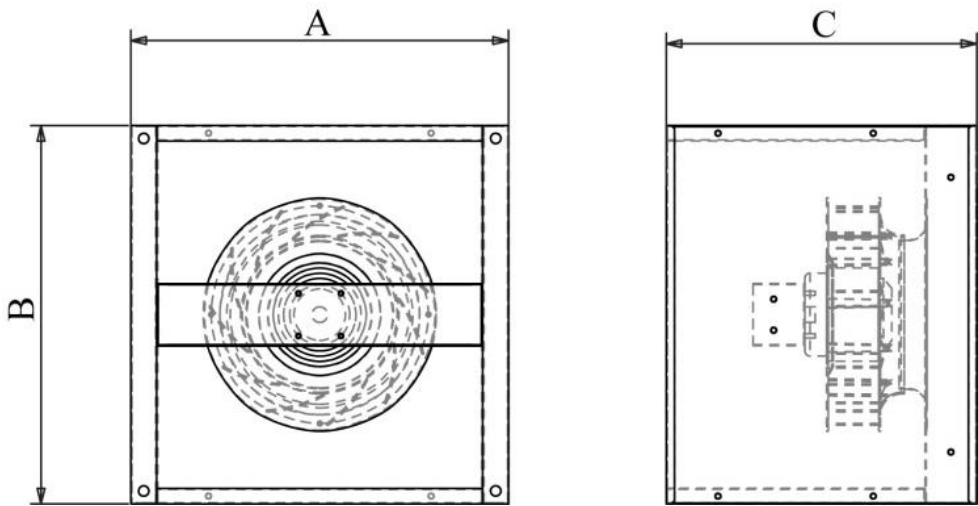
## Electrical Data

Model	CFQ 225	CFQ 280	CFQ 315
Volt / Phase / Hz	230/1/50	230/1/50	230/1/50
Max Motor Input (W)	52	107	150
Air Flow (CMH)	497	878	1631
Static Pressure (Pa)	134	203	287
Amps	0.23	0.53	0.68
RPM	1440	1410	1430
LwA dB(A)	67	70	73
LpA dB(A) at 3m	46	49	52

- Speed (RPM) shown is nominal. Performance is based on actual speed of test.
- LpA-dBA levels are not licensed by AMCA International
- Performance certified is for installation type D-Ducted inlet, Ducted outlet. Performance ratings do not include the effects of appurtenances (accessories).
- The A-weighted sound ratings shown have been calculated per AMCA International Standard 301. Values shown are for inlet LwA sound power levels for installation type D ducted inlet, ducted outlet. Ratings include the effects of duct end correction.



Dimension (mm)



Model	A	B	C
CFQ 225	365	365	300
CFQ 280	440	440	300
CFQ 315	490	490	360

\* Specifications subject to changes without prior notice

GTG Industries Sdn Bhd

26-2,1st Floor, Jalan PJU3/38A,  
Sunway Damansara Technology Park,  
47810 Petaling Jaya, Selangor.  
TEL +603-7733 0212 / +603-7733 0213    FAX +603-7733 0218  
EMAIL [inquiry@gtg.com.my](mailto:inquiry@gtg.com.my)    WEBSITE [www.gtg.com.my](http://www.gtg.com.my)

