

GTG[®]

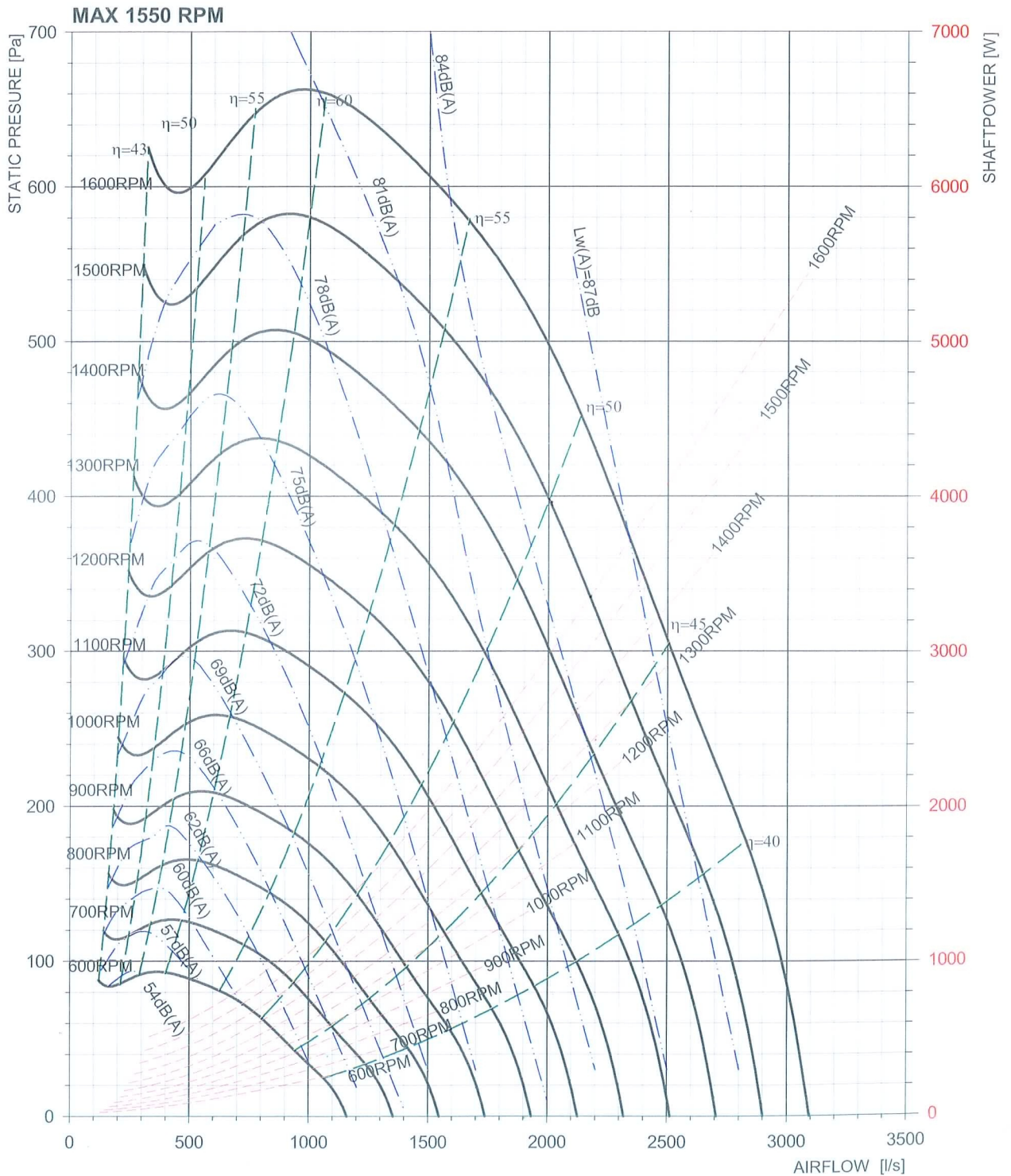
**CSB
Series**



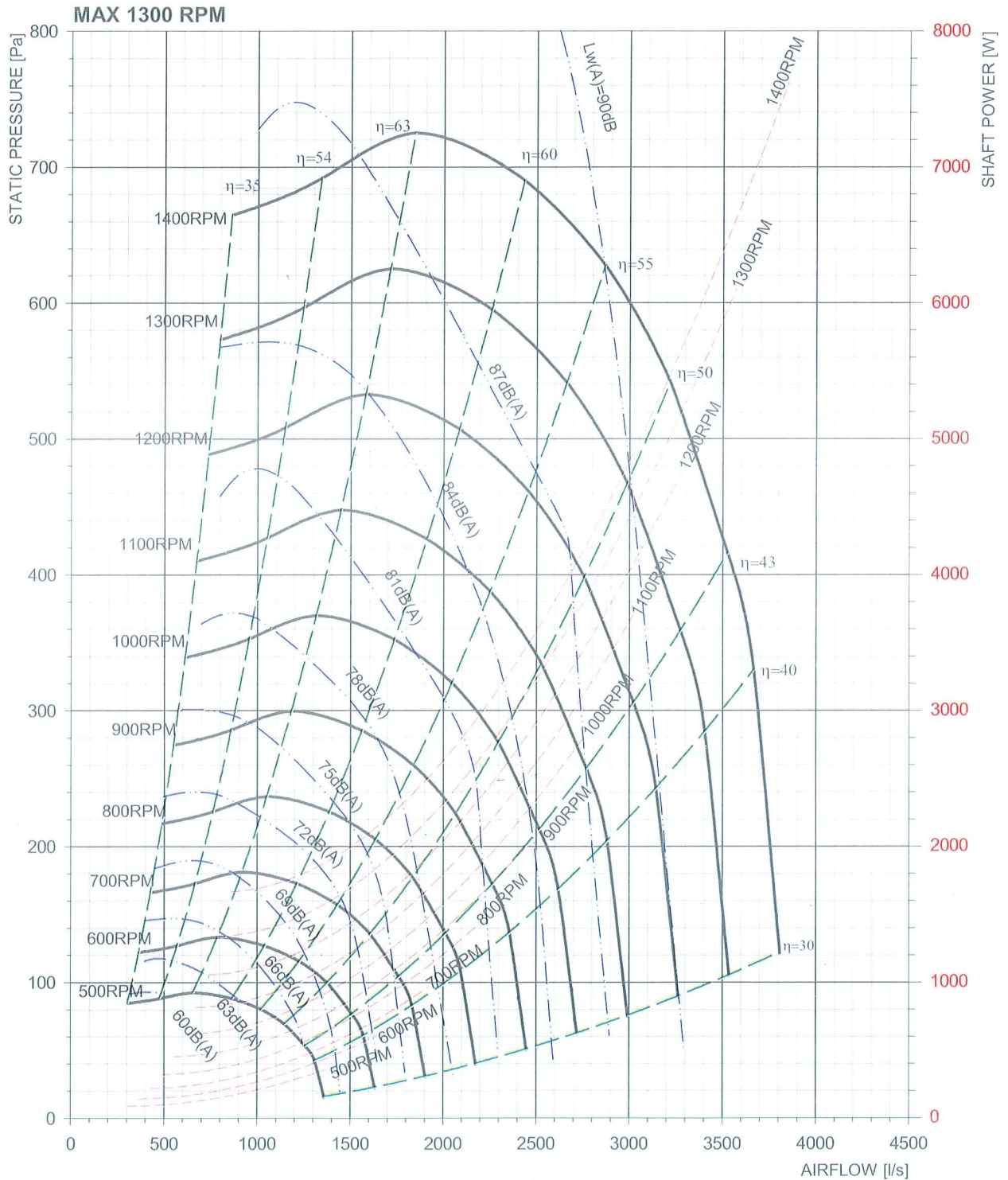
Single Skin Cabinet Fan



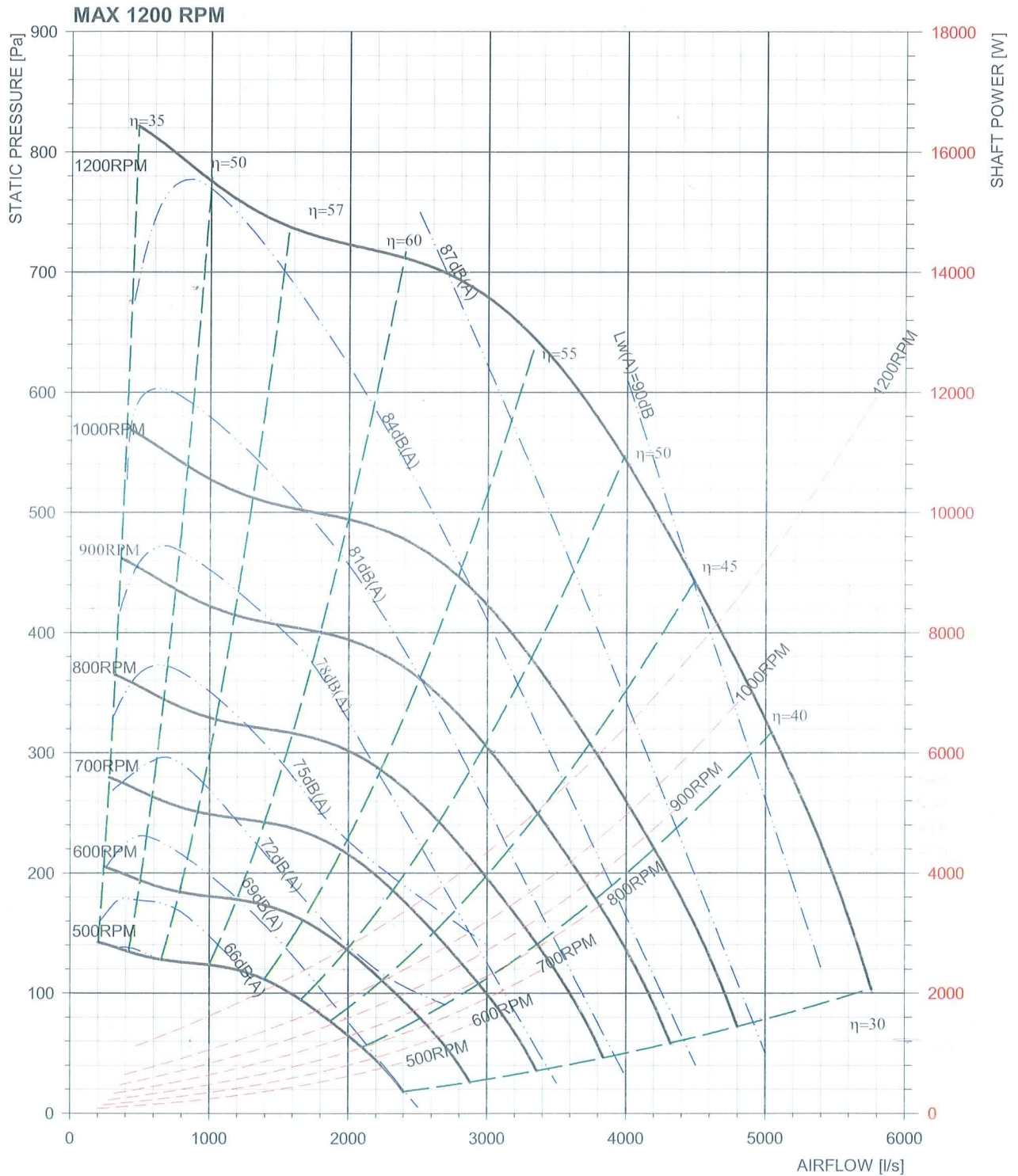
CSBI 10/10



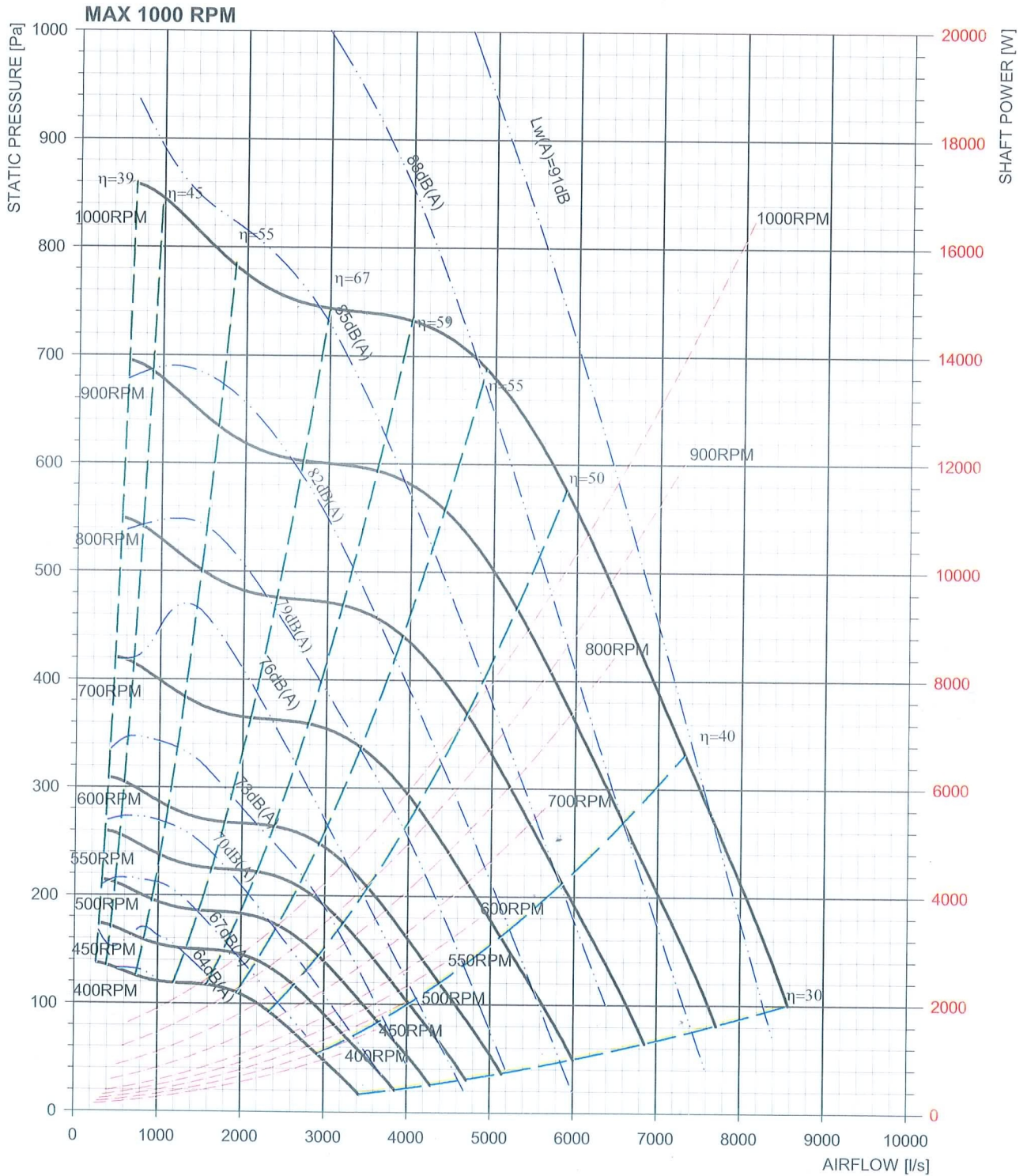
CSBI 12/12



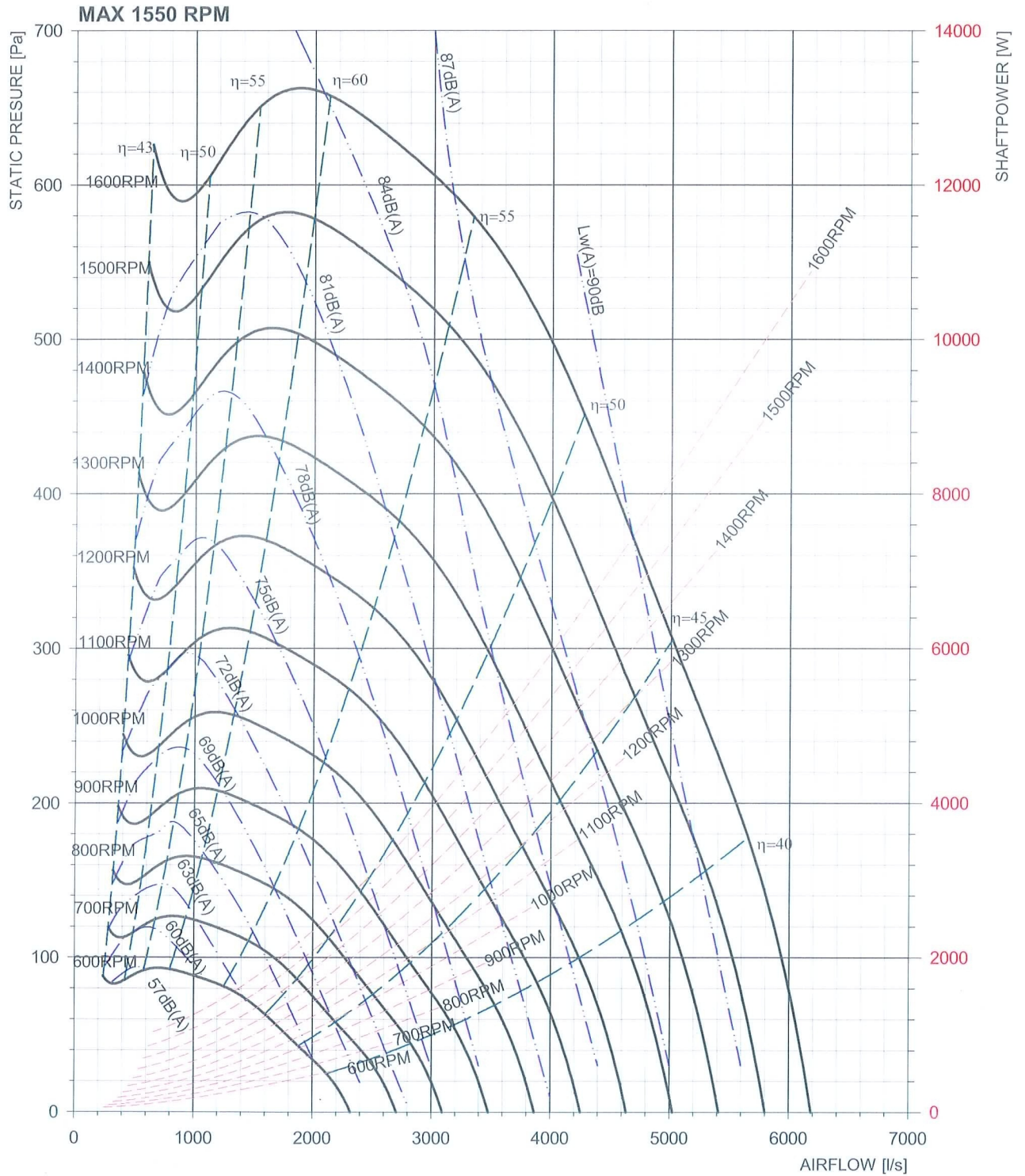
CSBI 15/15



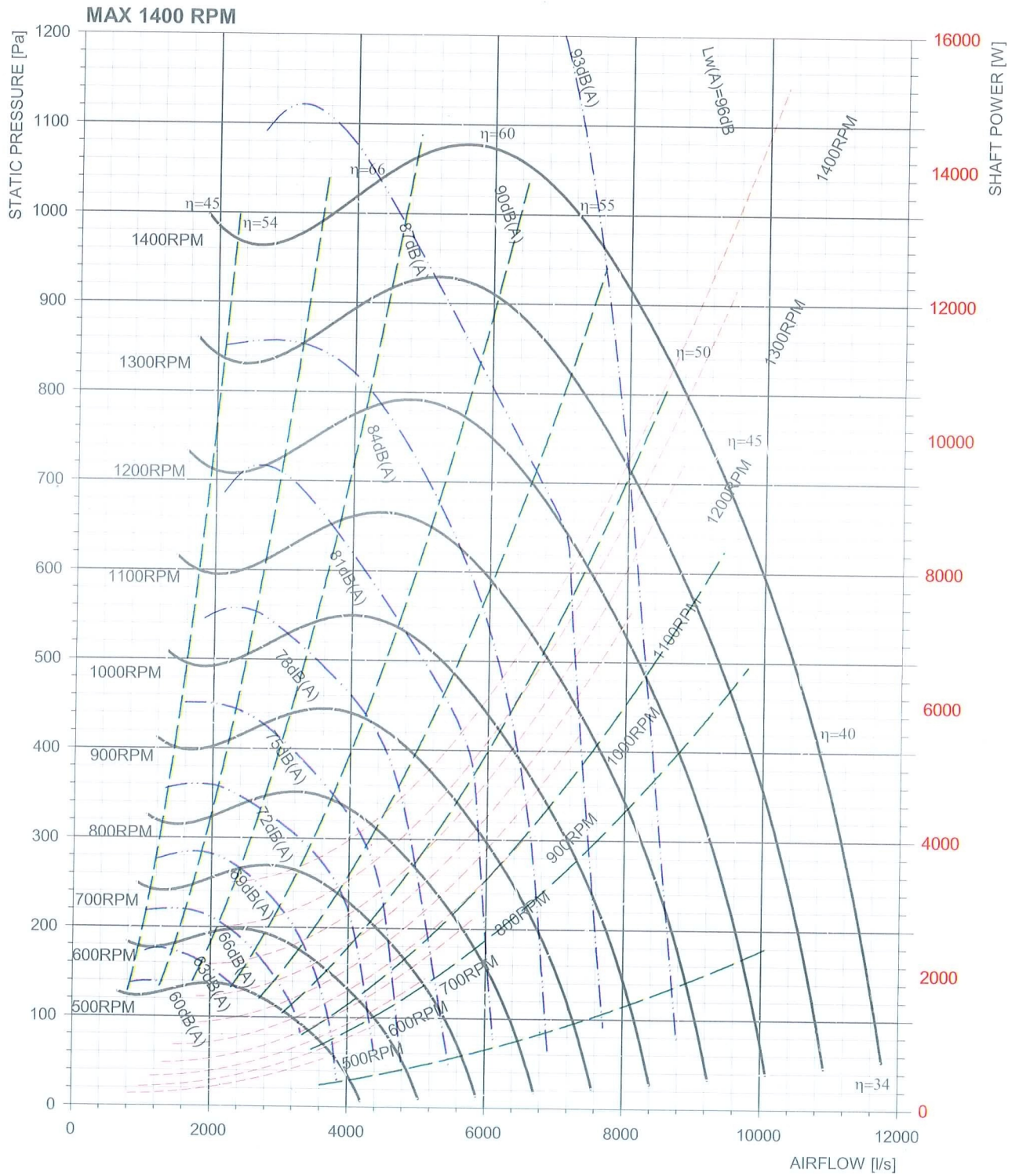
CSBI 18/18



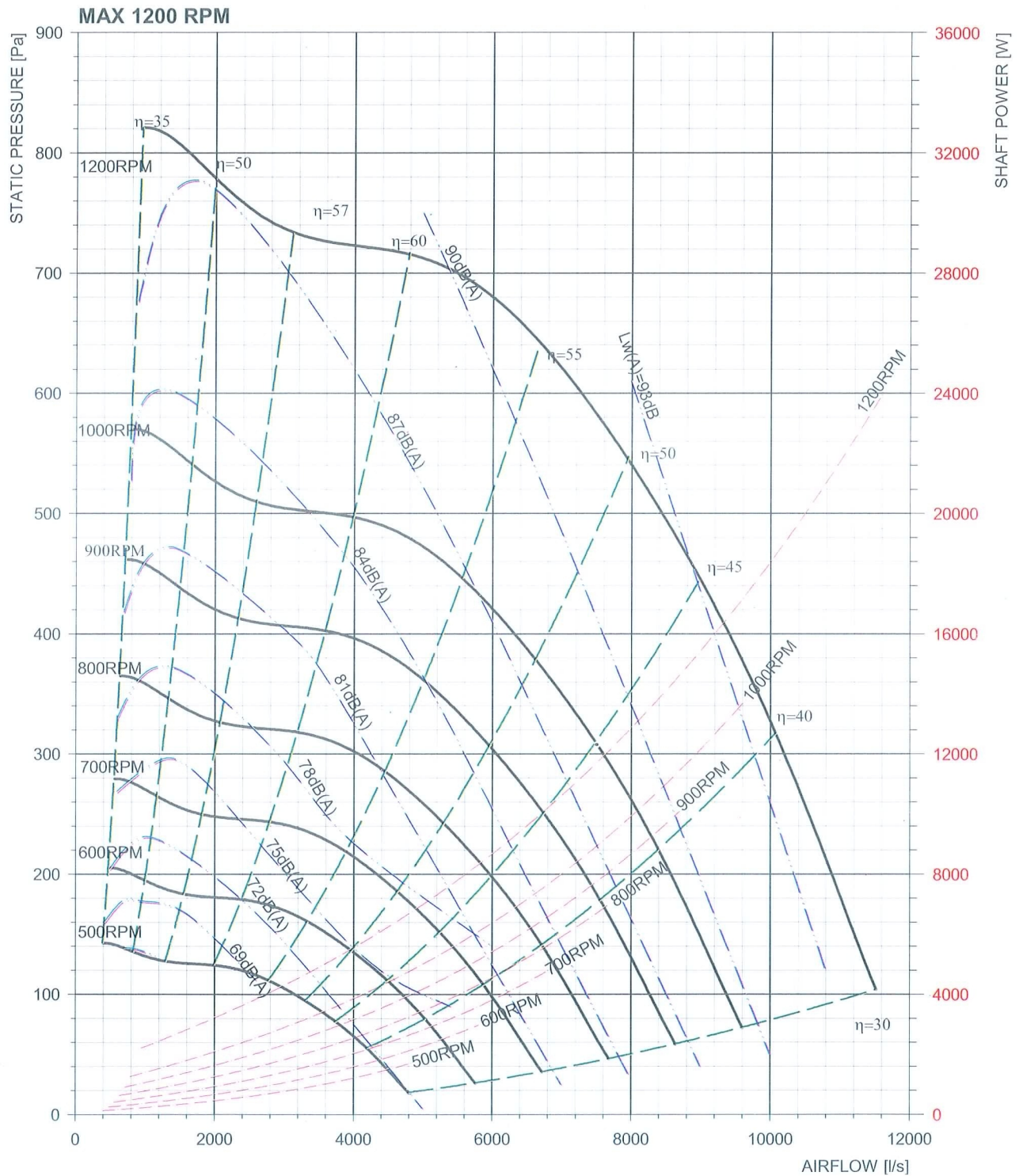
CSBT 10/10



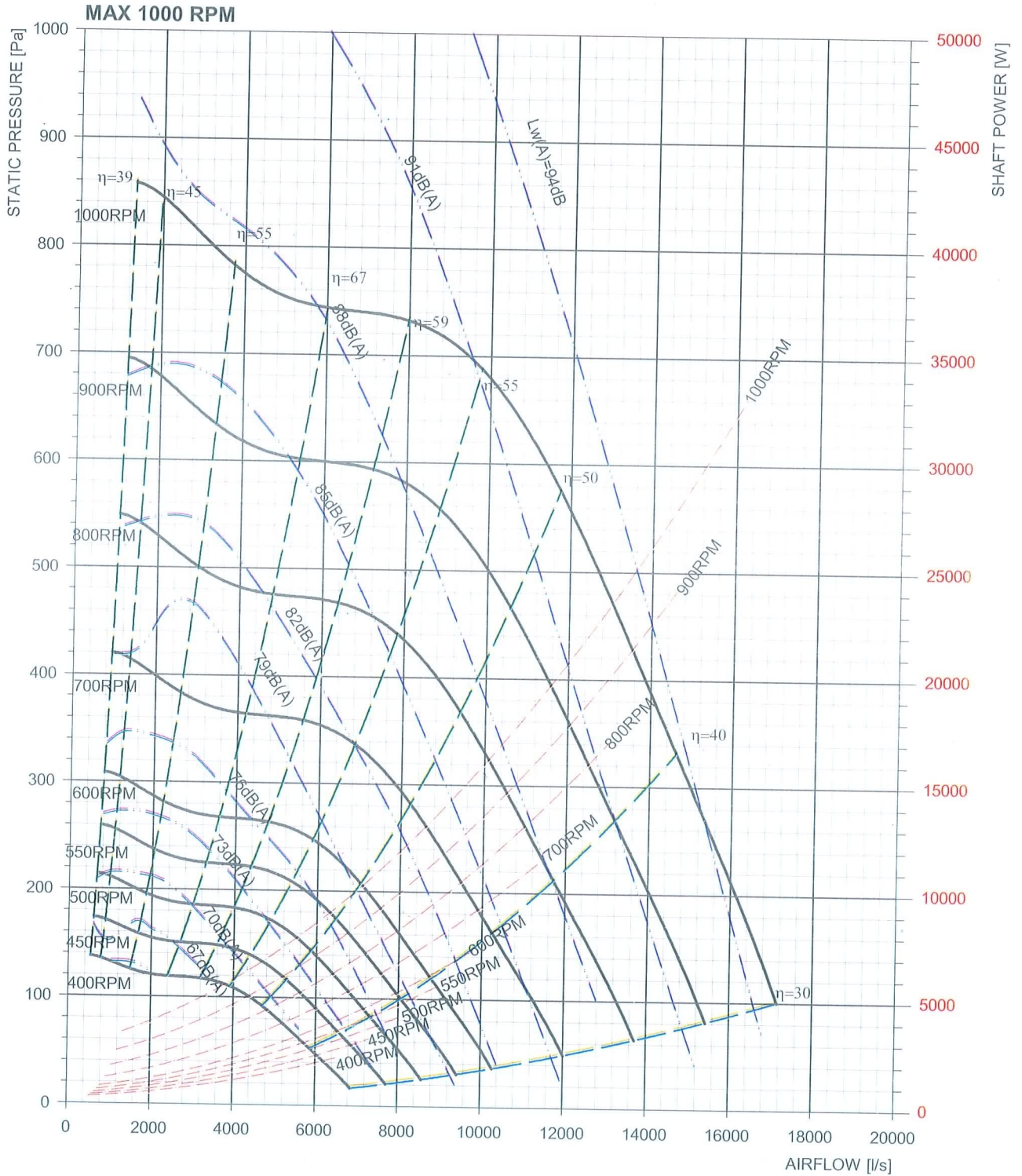
CSBT 12/12



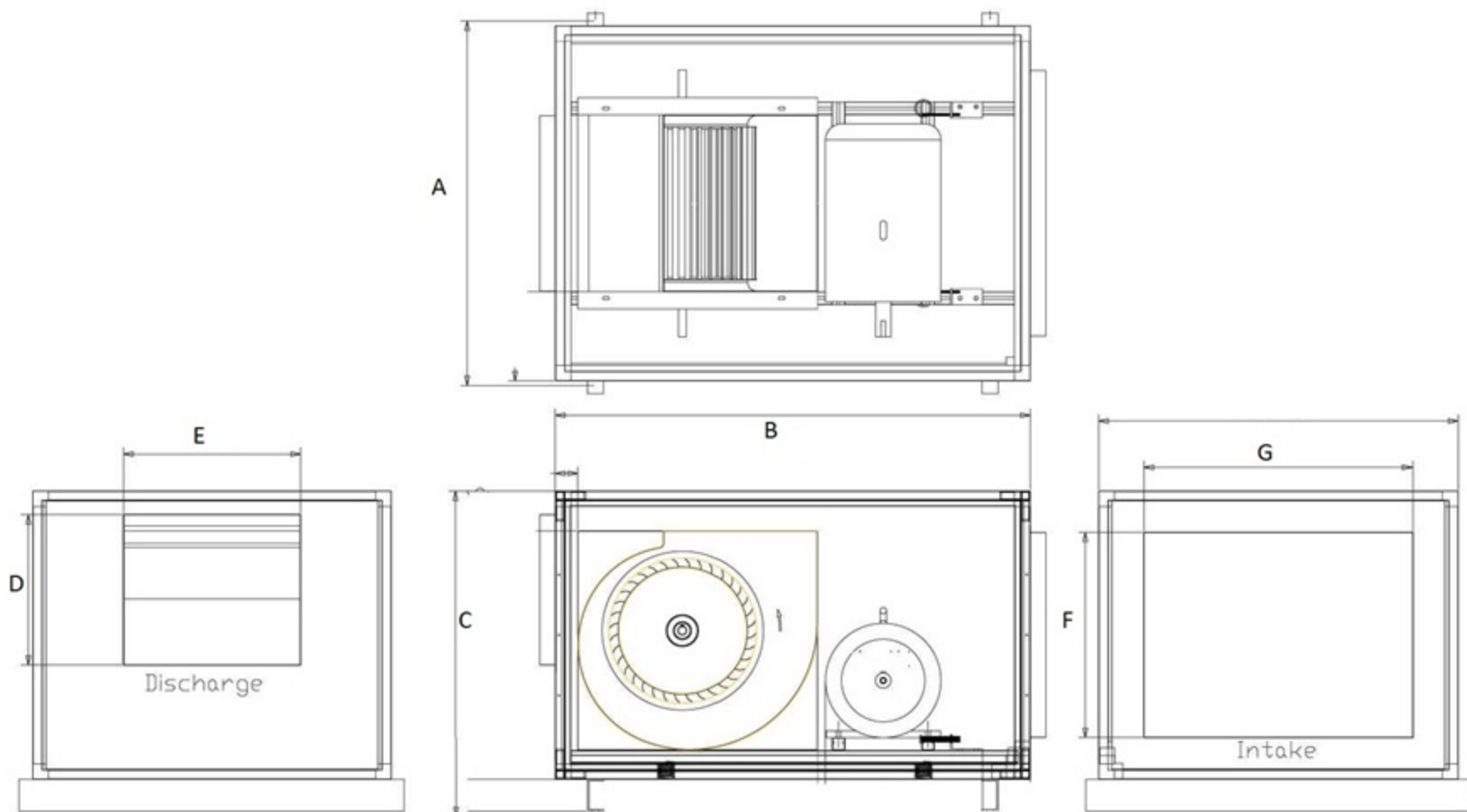
CSBT 15/15



CSBT 18/18



CSBI & CSBT Series



Dimension(mm)

Model	A	B	C	Discharge		Intake	
				D	E	F	G
CSBI							
CSBI 10/10	753	925	742	288	333	592	653
CSBI 12/12	869	1037	823	342	398	673	769
CSBI 15/15	1004	1122	917	404	473	767	904
CSBI 18/18	1164	1269	1044	480	557	894	1064
CSBT							
CSBT 10/10	1346	965	742	338	976	592	1246
CSBT 12/12	1585	1073	823	392	1090	673	1485
CSBT 15/15	1857	1197	917	454	1376	767	1757
CSBT 18/18	2177	1348	1044	530	1620	894	2077

GTG Industries Sdn Bhd

(Formerly known as Grand Everise Sdn Bhd)
(912584-W)

26-2, 1st Floor, Jalan PJU3/38A,
Sunway Damansara Technology Park,
47810 Petaling Jaya, Selangor.

TEL +603-7733 0212 / +603-7733 0213 FAX +603-7733 0218

EMAIL inquiry@gtg.com.my WEBSITE www.gtg.com.my



SCAN & VISIT OUR WEBSITE



Specification subject to changes without prior notice.